



FALCO CUP 2016

Pre WTOC 2017

TRAIL ORIENTEERING

Relay + TempO + PreO double-course

12-14 August, 2016, Druskininkai, Lithuania

In conjunction with foot orienteering event Dzūkija 2016



OSK „Falco“

## Bulletin #2 Event program

<i>Time</i>	<i>Event</i>	<i>Place</i>
<b>August 12 (Friday), 2016</b>		
11:00 – 15:00	Arrival, Registration	Event Center 54.00966, 23.97742
16:00	<b>Relay course</b>	Druskininkai 54.01548, 23.9674
<b>August 13 (Saturday), 2016</b>		
11:00 – 13:30	Arrival, Registration	Event Center 54.00966, 23.97742
13:00 – 15:00	<b>PreO course 1 (ECTO #7)</b>	Druskininkai 53.98974, 23.97309
16:00 – 18:00	<b>TempO course</b>	Druskininkai 54.01018, 23.97817
<b>August 14 (Sunday), 2016</b>		
09:00 – 11:00	<b>PreO course 2 (ECTO #8)</b>	Druskininkai 54.01972, 23.95474
15:00	Prize giving and Closing ceremony	At PreO start place

Exact places are mapped here:

<https://drive.google.com/open?id=1AeNwPT1t8RVQYkzxlCcLEyQzd1Y&usp=sharing>

Starts times are harmonized with foot orienteering events to give opportunity to take part in both events.

Foot orienteering events start times and distances from TrailO starts:

<i>FootO start time</i>	<i>TrailO start time</i>	<i>Distance from FootO to TrailO</i>
<b>August 12 (Friday), 2016</b>		
14:00	16:00 Relay start	45km, 40min. drive
<b>August 13 (Saturday), 2016</b>		
11:00	13:00-15:00 PreO1 course start	8km, 10min. drive
<b>August 14 (Sunday), 2016</b>		
11:00	09:00-11:00 PreO2 course 2 start	5km, 6min. drive

We can manage start time both in FootO and TrailO competitions to be early or late start times. Just have to be informed from you. On August 12, it will be the only possibility to have early start in FootO and 3rd leg TrailO relay.

In addition there will be organized training camp after competitions, at 15-17 August, on same terrains and maps before leaving to WTOC 2016. Please contact us with your requirements and wishes if you want to stay and take part in it.

## Classes, result calculation and prizes

### Relay

There will be **open (OE)** and **paralympic (PE)** commands each of 3 competitors. Paralympic (PE) command – all members from the same paralympic class. It can be mixed commands created just before start, as there is no any other limitation for command members (country, club and etc.). So, if you are alone, don't worry – it will be opportunity to join a command which will need you or just go for the first leg.

It will be 10 controls for each leg to choose from total 30 controls + 1 TempO station with 4 time controls. Each mistake on PreO part will accumulate 60sec. and each mistake on TempO part will accumulate 30sec. penalty time. The total command result will be determined by adding answer times on TempO station and penalty times of all legs.

First 3 commands in both classes will be awarded with event medals.

### TempO courses

Competitors are not divided to any class.

The course will have 6 or 7 control stations with 5 time controls at each. 30 seconds penalty for each wrong answer will be added to total answer time. The limit answer time at each station - 2,5 min.

First 3 competitors will be awarded with event medals.

### PreO courses

OSK Falco 2016 results will be calculated in classes: **Open (OE)**, **Paralympic (PE)** and **Junior (JE)** (age up to 18). According to ECTO 2016 rules only open class is calculated. For this reason all classes: Open (OE), Paralympic (PE) and Junior (JE) will be joined together while calculating results for ECTO 2016 #7 and #8 stages. First 3 competitors in both courses and all classes will be awarded with event medals. First 3 competitors in both ECTO stages will be awarded with cups and prizes.

### **Combined results**

The total result of PreO courses will be timed control result + 60 seconds penalty for each mistake at course. TempO course result will be added to PreO courses results and the Combined Falco Cup 2016 result will be calculated for each class.

First 3 competitors in all classes will be awarded with event cups and prizes.

## **Start lists**

There will be no start list for relay - first leg of all teams will start at fixed time.

There will be no start list for TempO courses – all competitors will be allowed to start by free order at announced available starting time.

Start list of PreO1 (ECTO#7) will be published at: <http://wtoc2017.lt/2015/07/31/pre-wtoc2017/> and <https://www.facebook.com/events/154205471577486/> a week before competition day (06 August). Please contact us directly for start list corrections (early or late start times). Competitors that will be late at their start point or with late registration will have the opportunity to start after published start list ends at free order.

Start list of PreO2 (ECTO#8) will be published a day before competition day (13 August). Competitors that will be late at their start point or with late registration will have the opportunity to start after published start list ends at free order.

## **Assistants**

There will be no need of assistants at relay and TempO courses. We expect to have some assistants for competitors at Preo1 and PreO2 courses. We will be grateful for your early information on assistant needs. Competitor's own assistants are permitted.

## **Registration and start fee**

**Register here:** <http://www.orienteeringonline.net/CompetitionBasicInfo.aspx?CompetitionID=2358>

**In some cases You are allowed to register by mail:** [oskfalco@gmail.com](mailto:oskfalco@gmail.com)

**Please indicate Your name, country, club, class, courses, SI number (if available), command name (relay).**

Late registration will be possible at event center. It will be one deadline for registration to make start cost cheaper:

**05 August 2016.** 1 course price (each PreO1, PreO2 and TempO) – 10€ before deadline and 15€ after deadline.

Relay course price - – 5€ before deadline and 10€ after deadline for each competitor (leg).

Competitors born at 1998 or earlier pays with 50% discount.

Payment will be acceptable in cash at competition event center or by bank transfer.

## **Terrain and courses**

### **Punching:**

Electronic punching using SI (SPORTident) units. Competitors can use their own SI cards. It will be available to rent SI card at start place (3€ the whole event).

### **Course parameters and terrain:**

**Exact parameters and full information of all courses will be available at event center.**

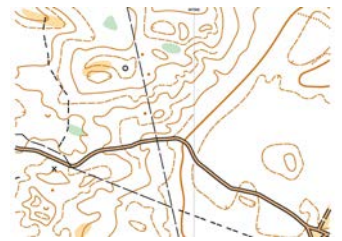
**Relay: 3x10 free order controls, total team length aprox. 4km, 4 timed controls (TempO style)** at the only station for all legs.

Open and semi open land with many vegetation and manmade objects and some mid-sized contour objects. All trails with firm surface.

Relay event will take place at public place.



**PreO1 (ECTO#7): 24 controls, length aprox. 2km, 2 timed controls** at the only station. Mature pine forest with good visibility and many contour objects. Most trails with firm surface. In most cases decisions should be made by map reading.



**TempO: 6 or 7 stations with 5 controls each.** Semi open city park with many vegetation and manmade objects and some mid-sized contour objects.

**PreO2 (ECTO#8): 24 controls, length aprox. 2km, 2 timed controls** at the only station. Mature pine forest with good visibility and many contour objects. Some trails with firm surface, but some forest trails are sandy, so a bit difficult for wheelchair users.



**All maps:** ISSOM 2007, 1:4000, contour interval 2,5m, size A4, waterproof, mapped at June-July 2016 by Andrius Jovaiša. Contours laserscans were used in mapping process.

**Author of courses:** Andrius Jovaiša.

**Inspector:** Alexander Kobzarev (Russia)

**A jury** of 3 persons from different countries will be appointed to rule on complaints and protests. The time limit for complaints is 15 minutes after the final results have been published at the competition centre. Any protest shall be made in writing to a member of the jury no later than 15 minutes after the organizer has informed the complainant of the decision about the complaint. A protest fee of 30 EUR shall be paid in cash when making a protest. The fee will be returned if the protest is accepted by the jury.

## Accommodation

There are many available hotels and other kind of accommodation in Druskininkai, but only few with the possibility to accommodate guests with disability. Druskininkai is popular Lithuania resort especially in summer time. Search for accommodation as early as possible.

We have made some limited reservations for you at these hotels:

<http://www.pusynas.lt/en/>

<http://www.parkovila.lt/en/>

Please feel free to contact us if these accommodations are suitable for you or for any search help.

**Event organizer:** OSK "Falco"

Kauno street 59, LT-54467, Ramučiai, Kauno raj., LITHUANIA; e-mail: [oskfalco@gmail.com](mailto:oskfalco@gmail.com)

**Account :** LT797044060007814548 **Bank:** AB SEB bankas, SWIFT: CBVILT2X; BIC: 70440

**Person in charge:** Andrius Jovaiša

Phone: +370 68788771, [andrius.jovaisa@gmail.com](mailto:andrius.jovaisa@gmail.com)

## Training camp before leaving to WTOC 2016

**There will be organized training camp at 15-17 August on same maps as "Falco cup 2016. Please contact for this event as soon as You will decide to join. We will take into account your needs and suggestions while planning the event.**